



LANDMARK
HERITAGE
FOUNDATION

FUNDING THE PRESERVATION OF

JULIA MORGAN'S BERKELEY CITY CLUB BUILDING

NEWS FROM THE CASTLE • QUARTERLY NEWSLETTER • FALL 2009
2315 DURANT AVE., SUITE 306 • BERKELEY, CA 94704 • (510) 883-9710



ENSURING THE FUTURE OF THE LANDMARK *A Message from the President, Mary Breunig*

“WHAT A MAGNIFICENT BUILDING” is frequently heard in the corridors and gardens of the Berkeley City Club. Since 1930, visitors, hotel guests, and members have enjoyed the “Little Castle’s” serenity, attractive gardens, quiet nooks, beautiful rooms, and extraordinary swimming pool. Indeed, the landmark is a very special place – a very real retreat in the heart of busy Berkeley.

What each of us may not fully realize or actually see are the effects on the building of 79 years of use. Here at the Landmark Heritage Foundation, we are very aware of the “Little Castle’s” restoration needs. From the original pool filters located in the basement to the crumbling tile roof areas, a list of projects totaling more than \$5,000,000 in estimated costs faces the restoration efforts of the Foundation and the Berkeley City Club. In addition, LHF has set a \$2,000,000 endowment goal of which \$140,000 has been raised.

Raising dollars in this difficult economic time poses many challenges. Donors may be hesitant to disburse limited discretionary monies dedicated in prior years for support of the Foundation, restoration grant opportunities are few and far between, and special fundraising events may not be well supported. What can you and LHF do to ensure the preservation of this magnificent building?

Practically and realistically, the Foundation will continue its efforts to secure preservation support. Another round of funding by the California Cultural and Historical Endowment (under the auspices of the State Library) presents a grant opportunity in 2010. The Berkeley City Club is proceeding with the elevator project (estimated to cost \$800,000) understanding that despite LHF’s ongoing fundraising (currently at \$282,000), the Club may have to secure loan monies to complete the

work. The Foundation solicits donations in each quarterly newsletter.

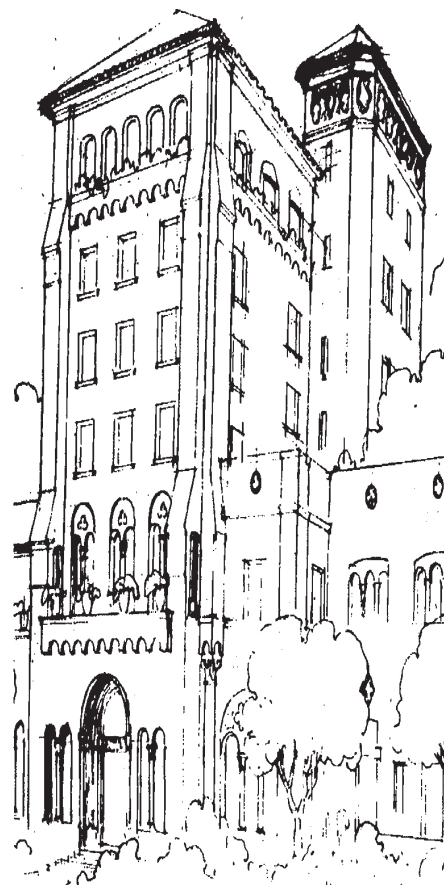
We’d like to ask our friends who are 70 ½ years or older to make a charitable gift in 2009 of up to \$100,000 from an IRA to LHF. This 2009 opportunity offers important income tax advantages. Every donation to LHF is fully tax deductible. Your gift received before December 31, 2009 may provide year-end tax benefits.

In addition, the Landmark Heritage Foundation invites you to establish a Planned Gift as part of your estate plans. We hope you will consider one of the following options. Your tax advisor or legal counsel may assist you with choosing what is best for your particular charitable giving plans.

- **Charitable Gift Annuity:** tax deductions and secure, guaranteed income for life; a “safe harbor” investment opportunity.
- **Bequest:** a designated cash gift in one’s will or trust establishes your legacy of LHF support. The Edith Ritchey Trust and the Mabel Bolton Bequest, for example, helped fund the Endowment and various LHF preservation projects.
- **Charitable Giving Account:** Charles Schwab, T. Rowe Price, and other institutions offer special investment funds with tax-free potential growth while making a lasting philanthropic impact.
- **Charitable Remainder Trust:** tax-efficient method to convert appreciated securities to regular income payments and ultimately to provide a significant gift to LHF.
- **Personal property:** stocks, bonds, real estate or other items to be distributed to LHF by your estate.
- **Charitable Lead Trust**
- **Life Insurance:** make LHF a designated beneficiary on your life insurance policy.
- **Memorial Gifts to LHF**

You may request a copy of the LHF Deferred Gift Policy. Estate gifts receive special acknowledgments or benefits based on the size of the gift: listing in the LHF Preservation Honor Roll, recognition plaques, hotel accommodations, naming of hotel rooms or suites, etc. You may also receive capital gains, income, gift, or estate tax benefits depending on the plan you establish.

Thank you for your support.



“From the tried and true act of letter writing to ‘going legal’, there’s no shortage of strategies for protecting the historic places that define our neighborhoods.”

—National Trust newsletter, Sept. 2009

NEWS FROM THE CASTLE FALL 2009

News from the Castle is the official newsletter of the Landmark Heritage Foundation. The Foundation is a tax-exempt charitable organization dedicated to the preservation of the unique Julia Morgan-designed building that is home to the Berkeley City Club.

◆ BOARD OF DIRECTORS ◆

Mary Breunig, Acting President
Annalee Allen, Vice President
Anne Foley, Treasurer
Anne-Catrin Schultz, Secretary

◆ DIRECTORS ◆

Michael Corbett, Sarah Gill,
Wendy Markel, Steve Schneider,
Steve Smith, Felicitas Titus

◆ EX OFFICIO ◆

Mark Read
Berkeley City Club President
Sharon Entwistle
Building Conservancy
of Northern California

◆◆◆
The Julia Morgan Preservation Committee of the LHF meets the second Wednesday of each month to approve projects and disbursements. The LHF Board meets quarterly. All persons are welcome at these meetings; to attend call (510) 883-9710.

Free public tours are jointly sponsored by the LHF and the Berkeley City Club the fourth Sunday of every month except December. For public tour details or information on group tours, contact the Landmark Heritage Foundation.

◆◆◆ LANDMARK HERITAGE FOUNDATION

2315 Durant Avenue #306
Berkeley CA 94704
Phone/Fax: (510) 883-9710
landmarkheritage@att.net
www.landmarkheritagefoundation.org

LHF Office is staffed
Tues., Wed. & Thurs. 10am-2pm

LANDMARK HERITAGE FOUNDATION GOES ONLINE

THE LANDMARK HERITAGE Foundation, charged with the historical preservation of our City Club building and promoting Julia Morgan's legacy, took its place on the Web on October 1, 2009. Visit www.landmarkheritagefoundation.org. It is a rich collection of past and current visuals, including a video tour. The text sketches Miss Morgan's life and career, lists LHF activities, and presents a brief description of the building. The site also offers a list of public events offered at the Berkeley City Club.

Big Bug Visuals in Berkeley designed the web site. Jennifer Walker, the LHF site designer, has frequently visited the clubhouse and remarks, "Great architecture is designed for life, for the use of people. Your clubhouse was specifically created to be a venue for the artistic, cultural and social activities of local women. They were the beneficiaries of the redefinition of women's social roles in the early decades of the twentieth century."

The site's pictures tell the landmark's story, but music has the power to add a further dimension, and the video tour offers an opportunity to evoke the elegant high energy of the Club's early years. The Hot Club of San Francisco, led by Paul Mehling and the Bay Area's foremost purveyor of '30s swing, graciously gave permission to use one of their album tracks, "Be That Way," as a soundtrack.

We heartily applaud Dick Bagwell, building tours coordinator and BCC member who sketched out the format of the site and wrote the initial text draft. The Landmark Heritage Foundation's board members made additional contributions and suggestions. *Big Bug Visuals* will continue to monitor the site.

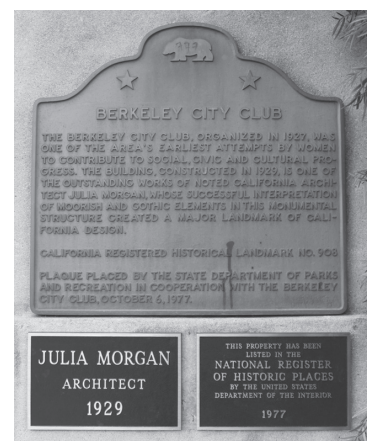
You are encouraged to send the link to family and friends to show off our striking and historic setting. "But of course nothing equals an actual tour with one of our building docents," comments Bagwell. "Please join us at one of the fourth Sunday of the month tours (1-4 p.m.)" Or, schedule a special tour for a group of friends or associates by calling 510 883-9710.

LANDMARK PLAQUES REPLACED

THROUGH THE JOINT EFFORTS and financial contributions of the Berkeley City Club and the Landmark Heritage Foundation, at long last the stolen historical markers have been replaced on the front of the Berkeley City Club building. The Julia Morgan and National Register plaques were in place for years and were stolen in late 2008. The Berkeley City Landmark plaque was added to this project as the building is listed as #2.

City Landmark #1 is the old Berkeley City Hall on Martin Luther King Jr. Way, built in 1908-09 and designed by architectural partners John Bakewell and Arthur Brown. Like Julia Morgan, both were UC grads and students at the Ecole des Beaux Arts in Paris. They also designed the San Francisco City Hall and Coit Tower. Brown designed the SF Opera House independently.

City Landmark #3 is the Town and Gown Club, 2401 Dwight Way, built in 1899 and designed by Bernard Maybeck who also attended the Ecole. He designed the First Church of Christ, Scientist, 2619 Dwight Way, and the UC Faculty Club, and the Palace of Fine Arts in San Francisco. Maybeck taught geometry at UC in the late 1890's and was a teacher and mentor of Julia Morgan.



*Thank you Docents and other Volunteers
for sharing your time and talents leading building tours, archiving historical
materials and working to ensure the success of our organization:*

DICK BAGWELL
MARY BREUNIG
MARY BUCHER
MANUELLA BURRELL
CAROL CARMAN
SHANNON CARROLL
CLARE FISCHER

ANNE FOLEY
KÄREN FREDERIKSEN
SARAH GILL
TATJANA HASCHEMI
JANICE KELLY
FREYA READ
JEANNINE RICHARDSON
JARA RUIZ-ANCHIA

TECIA RYAN
ROBIN SHOURIE
BETSY SMITH
BONNIE STILES
FELICITAS TITUS
PAT TODHUNTER
HIDEKO WINANS

*We appreciate your kind and in-kind contributions to the Foundation.
We invite members and non-members of the Berkeley City Club to volunteer.*

LANDMARK HERITAGE FOUNDATION STATEMENT OF FINANCIAL POSITION

– YEAR ENDED DECEMBER 31, 2008 –

ASSETS

Current assets	
Cash and cash equivalents	\$ 317,563
Investment	147,227
Inventory	2,208
Prepaid expenses	462
Total current assets	467,460
Total Assets	\$ 467,460

LIABILITIES AND NET ASSETS

Accounts payable and accrued liabilities	\$ 2,166
Deferred income	450
Total Liabilities	2,616
Net assets	
Unrestricted	\$ 152,060
Restricted	312,784
Total net assets	464,844
Total liabilities and net assets	\$ 467,460

Additional information available at the LHF office.

*Before the building, before the inspired
selection of Julia Morgan as their architect,
there were the women of the “Berkeley
Women’s City Club.” Their publication,
“The Bulletin,” August 1927 – June 1930 was
the precursor to “The Record” first published
in November 1930 once the building was
completed. A CD of “The Bulletin” is available
at the Front Desk for a \$5 contribution to LHF.*

*We thank volunteer Dick Bagwell for
scanning the original documents.*





FUNDING THE PRESERVATION OF
JULIA MORGAN'S
BERKELEY CITY CLUB
BUILDING

2315 DURANT AVE., SUITE 306 • BERKELEY, CA 94704

Public Events at the Berkeley City Club



FALL 2009

**Berkeley City Club
Historic Hotel**

www.berkeleycityclub.com

**Tours of Julia Morgan's
"Little Castle"**

4th Sunday of every month
1-4 pm

Actors Reading Writers

1st Monday of every month
7 pm

Aquatic Exercise

every Monday, Wednesday, Friday
4-5 pm

Bridge Players

Mondays 1 p.m.

**Berkeley Chamber Performances
2009-2010 season**

www.berkeleychamberperform.org

Berkeley City Commons Club

www.citycommonsclub.org
Fridays 11:30 am – 1:30 pm

**Central Works Theater
2009-2010 season**

www.centralworks.org

Dale Oxley Hair Salon

www.daledeanoxley.com

Studio Abasi Skin Care

www.studioabasi.com

Mother's Day Buffet Brunch

May 2010

The BCC Dining Room offers dinner for guests attending public events.

For details about events or to make reservations for dinner, call the Berkeley City Club (510) 848-7800